

2019 Shoreline Master Program Periodic Update

Doug Yormick, Assistant
Planner, DSD

Dan Nickel & Alex Capron,
The Watershed Company

What is the SMP?

Development regulations in Shoreline Jurisdiction

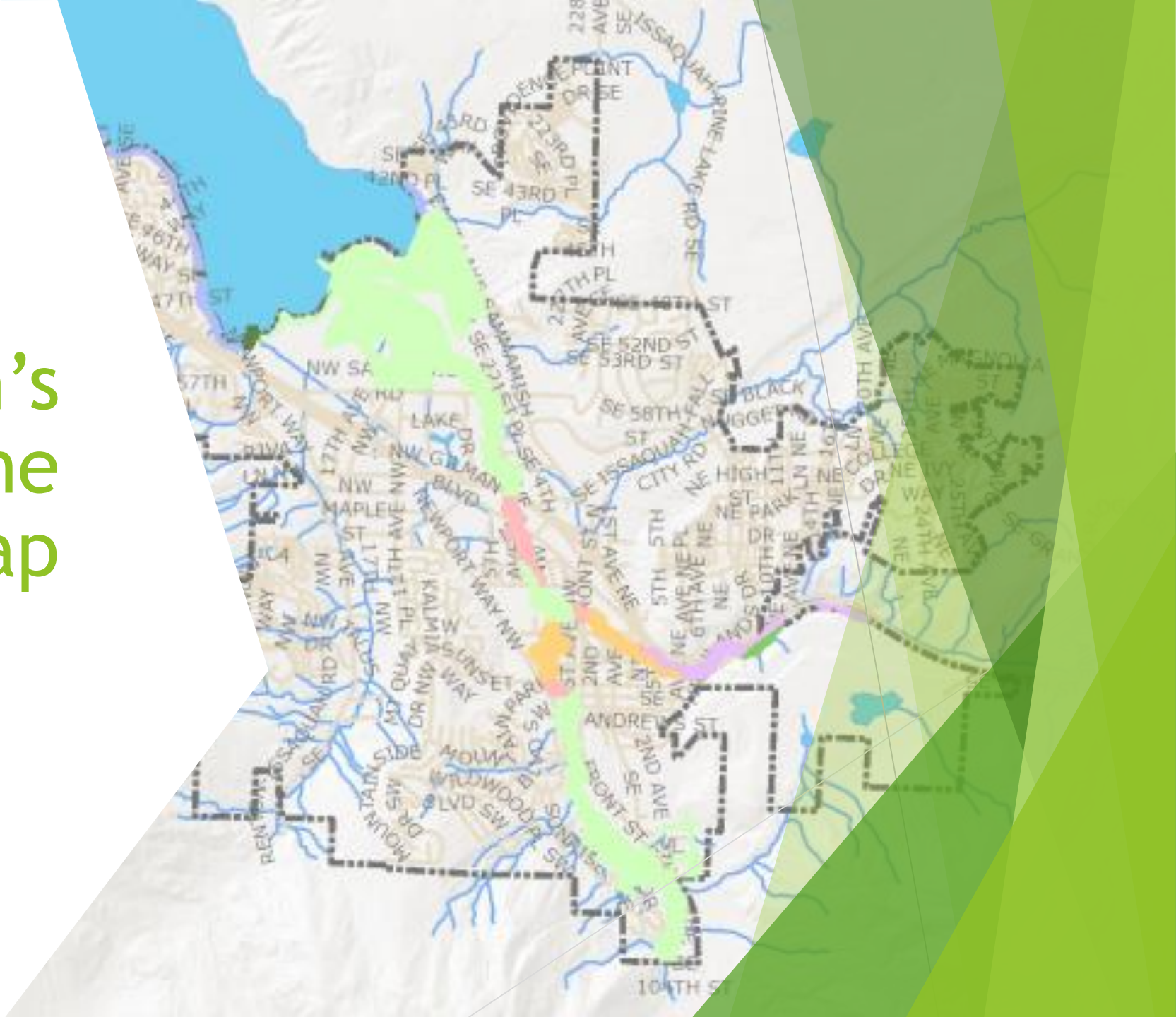
Shoreline Jurisdiction defined as 200 feet upland of Shorelines of the State (SOTS):

- Streams with mean annual flow of 20 cf/s
- Lakes greater than 20 acres
- All marine waters

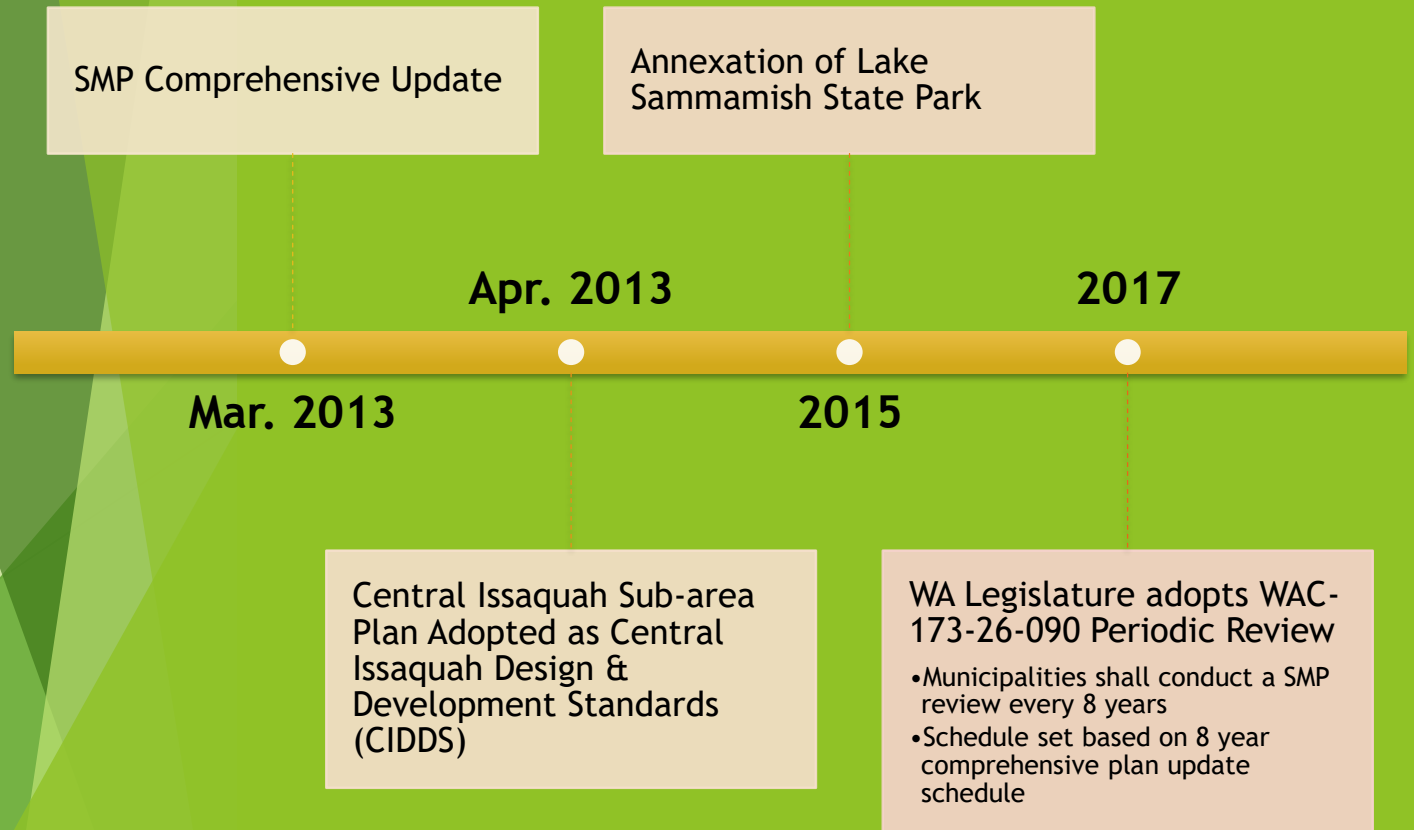
For Issaquah SOTS include:

- Issaquah Creek
- East Branch Issaquah Creek
- Lake Sammamish

Issaquah's Shoreline Jurisdiction Map



History Since Last Update



Purpose of Periodic Update

Address recent amendments to State Law and Ecology guidance

- Gap analysis based on Ecology checklist

Make it easier to navigate for staff and residents

- Correct code references and add hyperlinks to referenced codes among others

Consistency with City adopted plans and development regulations

- 2017 Comprehensive Plan
- 2018 Parks Strategic Plan
- 2013 Central Issaquah Design & Development Standards

The Periodic Update Will NOT

Re-evaluate

Re-evaluate the ecological baseline that was established as part of the 2013 comprehensive SMP update

Assess

Extensively assess no net loss criteria other than proposed amendments do not result in degradation of baseline conditions

Change

Change shoreline jurisdiction or environmental designations

SMP Amendments

Updated WAC 173-27-040 (shoreline exemption allowances)

- Cost threshold for exemption and docks
- ADA retrofit of existing shoreline structures

Definitions

- Update for consistency with State law and City regulations

Cross-references

- Utilize hyperlinks to state and local regulations
- Update obsolete or incorrect code citations

Consistency with Zoning Code

- Replace obsolete zoning code references with updated designations

March - April 2019

Establish webpage on City website advertise SMP overview

March 26, 2019 – Rivers and Streams Board Meeting

Present SMP project overview and purpose of the update

May 2019

Post SMP Code Amendments and Gap Analysis on Webpage

Mid-May-June 2019

Local SEPA review and approval

Joint 30-day public comment period

Department of Commerce/GMA 60-day review and approval

Ecology 45-day review and approval

May 23, 2019 – Planning Policy Commission Meeting

Joint Ecology and City Public Hearing

June 2019

Submit to Ecology response to public comments, Periodic Review Checklist, SMP Amendments, SEPA and GMA noticing materials

July 2019

Receive initial determination from Ecology

August 2019 – City Council

Public Hearing before City Council and Ordinance

September 2019 – Land and Shore Committee

City Council Land and Shore Committee Review of SMP

September 2019 – City Council

City Council Adoption of SMP Amendments

September 2019

SMP Submittal to Ecology

Timeline and Next Steps

Questions