

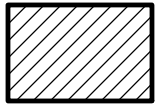

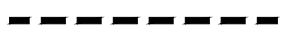
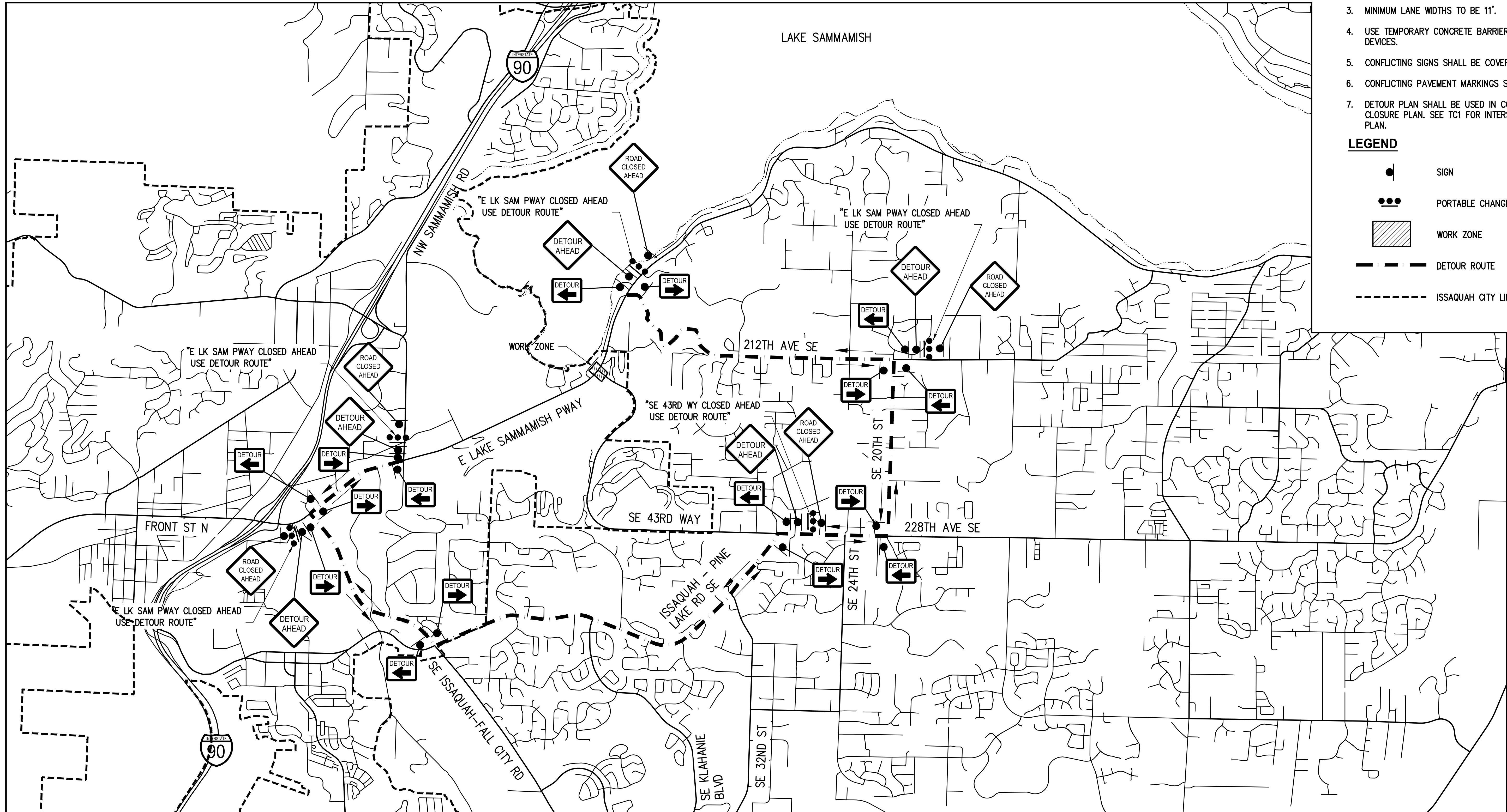


GENERAL TRAFFIC CONTROL NOTES

1. MAINTAIN BUSINESS ACCESS DURING BUSINESS HOURS.
2. ALL TRAFFIC CONTROL TO COMPLY WITH MUTCD REQUIREMENTS.
3. MINIMUM LANE WIDTHS TO BE 11'.
4. USE TEMPORARY CONCRETE BARRIERS AND CHANNELIZING DEVICES.
5. CONFLICTING SIGNS SHALL BE COVERED OR REMOVED.
6. CONFLICTING PAVEMENT MARKINGS SHALL BE REMOVED.
7. DETOUR PLAN SHALL BE USED IN CONJUNCTION WITH ROAD CLOSURE PLAN. SEE TC1 FOR INTERSECTION CLOSURE PLAN.

LEGEND

-  SIGN
-  PORTABLE CHANGEABLE MESSAGE SIGN
-  WORK ZONE
-  DETOUR ROUTE
-  ISSAQUAH CITY LIMITS



ELSP / SE 43RD DETOUR PLAN
1" = 300'



BID DOCUMENT

TC2

NO.	DATE	BY	APPR	REVISION

KPG
Interdisciplinary Design
SEATTLE Tacoma
3131 Elliott Ave Wenatchee
Suite 400 WA 98121 Bellevue
(206) 286 1840 www.kpg.com

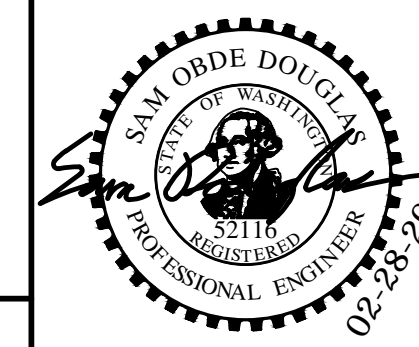


CITY OF
ISSAQUAH
WASHINGTON

DEPARTMENT OF PUBLIC WORKS
P.O. BOX 1307 ISSAQUAH WA 98027 (425) 837-3400

**ELSP & SE 43RD
ROUNDBOUT CHANNELIZATION
REVISIONS**

DRN: JF 2/2022 DSGN: JF 2/2022 CHKD: JF 2/2022



**EAST LAKE SAMMAMISH PKWY SE/
SE 43RD WAY ROUNDBOUT
DETOUR PLAN**

DATE: 2/2022 JOB#: STRT20002 SCALE: 1" = 1500'

41
OF
48